

ST001L is a software that computes internal temperatures and heat flux from outer temperature measurements. It is used in transient heat transfer analyzes.

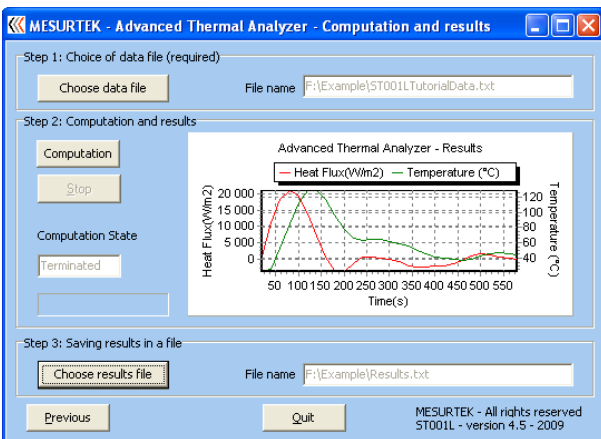
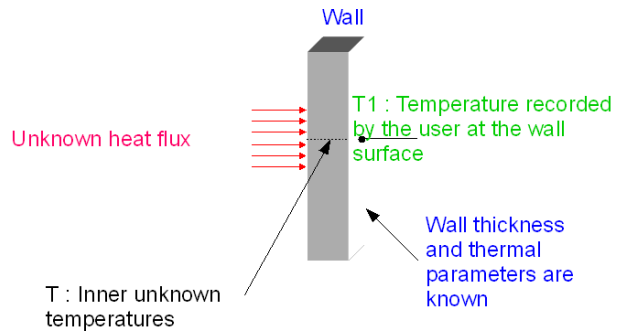
**Principle:**

Users record temperature variation at wall surface.

This wall is heated by a transient process.

Users enter the recorded data into ST001L.

ST001L compute thermal heat flux and inner temperature



**Main features:**

Easy to use and intuitive

No formation required

Windows XP or Vista

Languages: English – French

More than 20 items in material database

Several licensing modes: month, year, no limit

Demonstration version on simple request

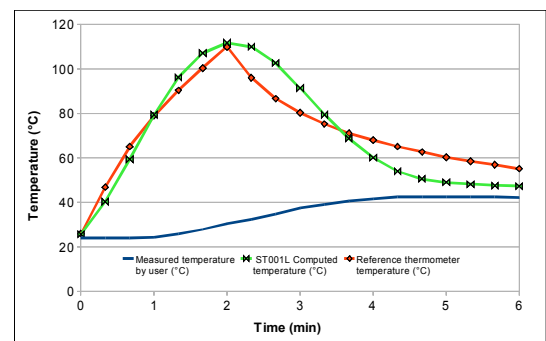
**Example:**

Thermal insulation analysis

User outer temperature measurement 40°C

Inner temperature 110°C !

Ceramic wall – Distance between recorded temperature and computation 20 mm – Acquisition step 20s



➔ ST001L helps you analyze processes, machines, prototypes and materials.